

**457×457 mm  
& New 614×614 mm**

## **Design Tile**

The interlocking tile for fast renovation

**Gerflor®**



# Design Tile

the interlocking tile for fast renovation



**Ceramic tile look**



**Renovation over ceramic**



**Adhesive free**



**Sound reduction**



**Rolling traffic compliant\***

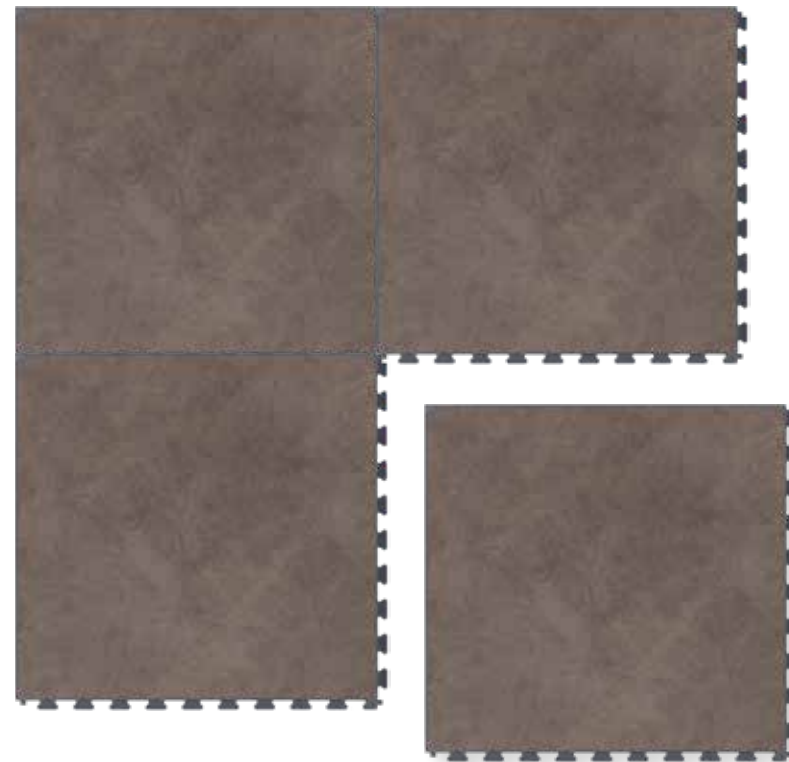


**Slip resistance**

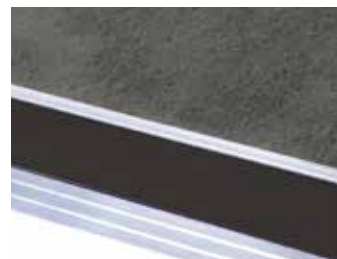


**Easy cleaning**

\* Conditions specified  
in installation guidelines



## Do not forget Access, Corners, profiles & tools



**Aluminum Ramp**  
Screwed - 2,5m  
Code: 0663 with Insert (Black,  
Light Grey, Dark Grey) Code: 4096

**PVC Ramp**  
2m - Code: 7032



**Diminishing profile - 2m**  
Code: 0490



**Entrance mat**  
Esplanade 9000  
Code: 1700



**Anti Bounce Mallet**  
Code: 5951

# Renovation solution

for high traffic applications



**Restaurants**



**Hotels**



**Retail Shops**



**Supermarkets**



**Public Buildings**



**Schools**

we **care** / we **act**



**Recycling**  
Recyclable  
Up to 80% recycled content



**Indoor Air Quality**  
TVOC < 100 micrograms / m<sup>3</sup>  
No Formaldehyde



**Reach**  
100% REACH compliant  
Phthalate Free (except recycled content)  
FREE of heavy metals  
FREE of solvent





1696 Acero Light  
Light grey grout



1698 Marmetta Beige  
Brown grout



1697 Acero Beige  
Light grey grout



1698 Marmetta Beige



1695 Manhattan Cloud  
Light grey grout



1693 Manhattan Grey  
Dark grey grout



1692 Manhattan Storm  
Light grey grout



1694 Manhattan Dust  
Light grey grout



1699 Luberon Grey  
Light grey grout

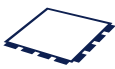


1699 Luberon Grey



# Design Tile

457 × 457 mm



1550 Vintage Maple  
Light grey grout



1551 Vintage Sand  
Brown grout



1552 Vintage Ash  
Light grey grout



1548 Limestone  
Light grey grout



1555 Sandstone  
Light grey grout



1544 Shalestone  
Dark grey grout



1553 Terrazzo Cream  
Dark grey grout



1554 Terrazzo Grey  
Dark grey grout



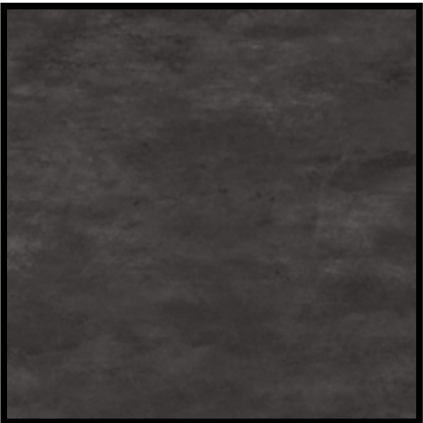
1549 Polished Concrete  
Light grey grout



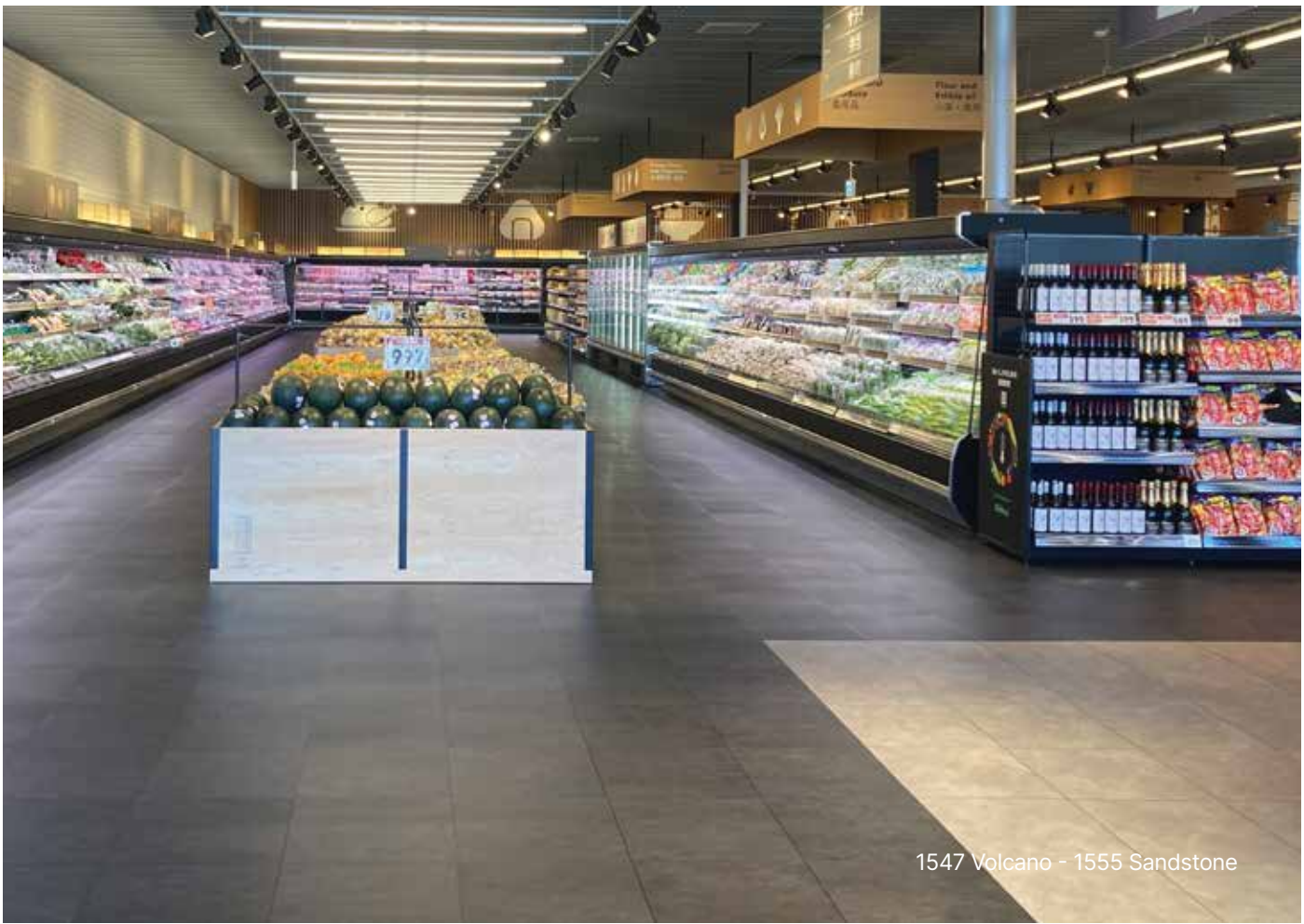
1545 Clay  
Dark grey grout



1546 Granite  
Dark grey grout



1547 Volcano  
Black grout



1547 Volcano - 1555 Sandstone

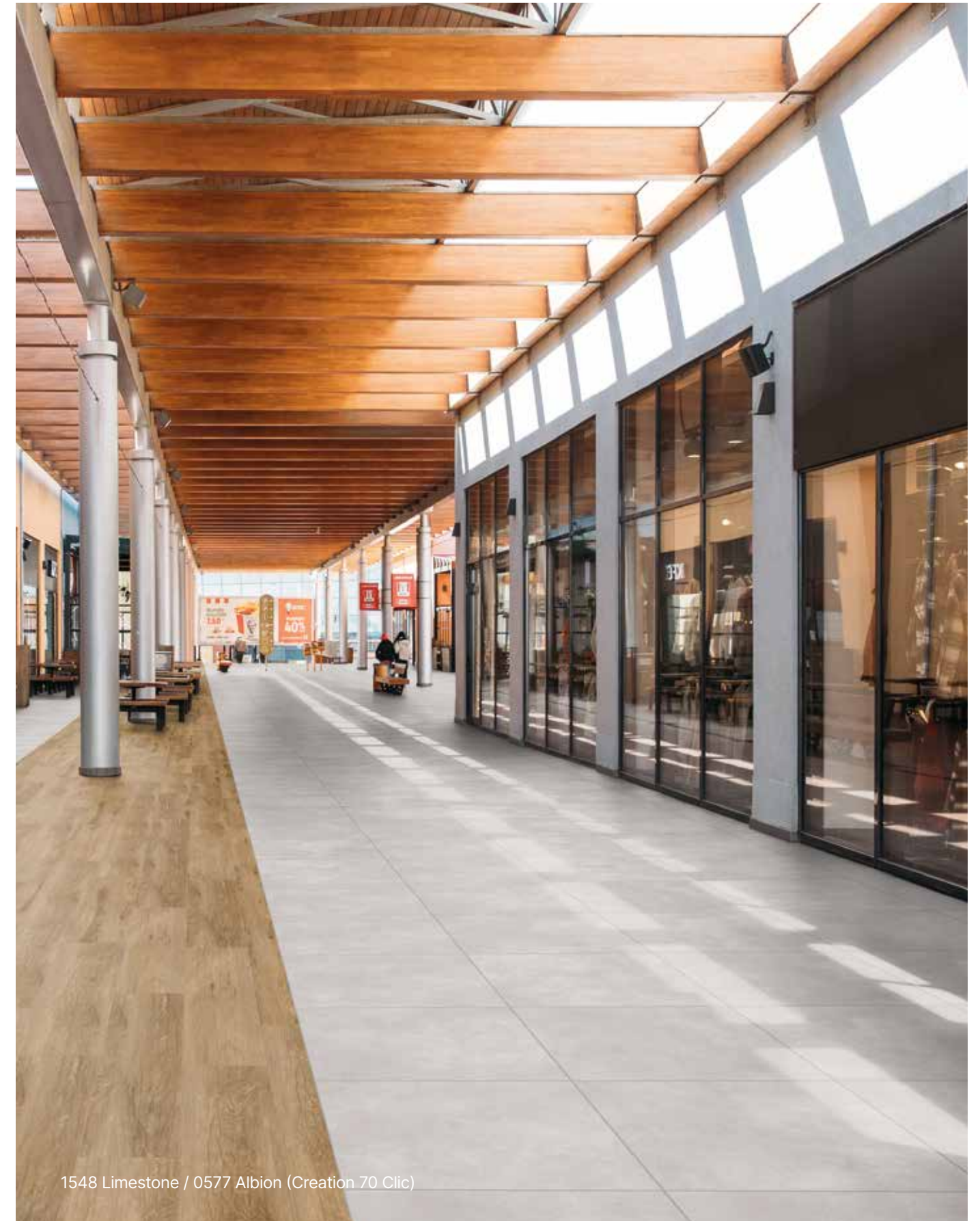
Access and corner available (Black, Dark grey, Light Grey and Brown)



**Combine Design tile**  
with **GTI Max** tiles & **Creation 70 Clic** planks!








1699 Luberon Grey / 0249 Carbon (GTI® Max Connect)




1548 Limestone / 0577 Albion (Creation 70 Clic)



## Notes

Design Tile			
Description			
Total Thickness	EN ISO 24346	mm	7.8
Thickness of the wearlayer	EN ISO 24340	mm	0.70
Weight	EN ISO 23997	g/m²	12 000
Size	EN ISO 24342	mm	457 × 457 / 614 × 614
Number of planks per box / m² per box	-	-	457×457 format : 5 / 1.04 m² 614 ×614 format : 3 / 1.13 m²
Classification			
Norm/Product Specification	-	-	EN ISO 10582
European Classification	EN ISO 10874	Class	34-43
Fire Rating	EN 13501-1	Class	Bfl-s1
Static Electrical Propensity	EN 1815	kV	< 2
Slip Resistance Wet	EN 16165 app.B (DIN 51 130)	Class	R10
Performances			
Wear Resistance	EN 660.2	mm³	≤ 2.0
Wear Group	-	group	T
Type Binder content	ISO 10582	group	I
Curling	EN ISO 23999	mm	≤ 1
Dimensional stability (norm)	EN ISO 23999	%	≤ 0.15
Residual Indentation	EN ISO 24343-1	mm	≤ 0.05
Castor chair test	ISO 4918	-	OK
Shore hardness	EN ISO 868	H <sub>o</sub>	> 60
Thermal Conductivity	EN ISO 10456	W/(m.k)	0.25
Colour Fastness	EN 20 105 - B02	degree	≥ 6
Surface Treatment	-	-	PUR+
Chemical Products Resistance <sup>(1)</sup>	EN ISO 26987	-	OK
Environment/Indoor Air Quality			
TVOC after 28 days	ISO 16000-6	micrograms/m³	<100
CE Marking			
		EN 14041	   

(1) Regarding the resistance to chemicals, please download the corresponding leaflet from our website.

 The information contained in this document is valid from 01/06/2025 and is subject to change at any time without notice.  
In the context of constantly changing technology, our customers are responsible, prior to any use, for checking with us that this document is the version in force.  
Rubber leaves indelible stains on vinyl floorings: do not use mats with rubber backing and replace tubular furniture feet with those made of PVC or polyamide.  
Place mats of sufficient length at entrances to reduce outside sources of dirt.

we care / we act our commitments for 2030



climate

-30% CO<sub>2</sub>  
scopes 1, 2, 3 in tons eq CO<sub>2</sub> vs 2019. Science Based Targets<sup>(1)</sup>



resources

75%  
biobased, mineral & recycled<sup>(2)</sup>

30%  
recycled content<sup>(3)</sup>



circularity

65 000  
tons of waste treated<sup>(4)</sup>

45%  
looselay<sup>(5)</sup>



health & well-being

100%  
of our products perform better than Indoor Air Quality standards<sup>(6)</sup>

95%  
sales covered by EPD<sup>(7)</sup>



people

30%  
women<sup>(8)</sup>

40%  
internal mobility<sup>(9)</sup>

Towards 0  
accident<sup>(10)</sup>

**More details:** 1. Scopes 1, 2 & 3, in absolute value, market-based. Trajectory approved by SBTi (Science Based Targets Initiative). 2. Origin of raw materials for the entire Floor & Wall portfolio, on average, by weight; including 15% virgin salt, a primary element in vinyl manufacturing. Compared to 70% in 2024. 3. Average content in the Floor & Wall vinyl portfolio, by weight. Compared to 21% in 2024. 4. Recycled in our factories and recycling units. Compared to 59 040 tons in 2024. 5. % of Floor activity with non-glued products, easy to remove, easy to re-use. Compared to 40% in 2024. 6. 100% of vinyl and linoleum sold to the building market below 100 micrograms/m³ (TVOC 28 days). 7. % of Floor & Wall activity covered by Environmental Product Declarations (EPD). Compared to 44% in 2024. 8. 30% women in our global workforce and among our managers. Compared to 26% in 2024. 9. % job openings filled with internal hires worldwide. Compared to 36% in 2024 (France). 10. Towards 0 accident: Lost Time Injury Frequency Rate(LTIFR) below 3 vs. 8,9 in 2024, for Gerflor employees worldwide.

